

# Nomadic Furniture Series



1996

BRAND

## MATSU

玛祖铭立集团成立于 1996 年，一直致力于为客户提供激发灵感的办公家具整体解决方案。

2001年 MATSU 与德国著名家具品牌达成战略合作，开创了中国办公家具品牌与欧洲合作的先河，将国际化的前瞻性设计，与德国家具精益求精的制造工艺，以及德式严谨的工作风格带入刚起步的中国市场。之后，又陆续与欧洲多家细分领域的领军品牌达成战略合作。

在将欧洲优秀设计带入中国市场的同时，MATSU 深感自主品牌原创设计的重要性，逐步加强自身原创实力，建立研发中心，并与诸多知名设计机构合作，独创属于 MATSU 品牌的原创办公家具。

Established in 1996, MATSU is dedicated to providing inspiring office furniture overall solutions for clients.

Replying on this craftsmanship spirit as a key to international stage, MATSU entered into strategic cooperation with famous German furniture brand. While introducing excellent European designs into China, MATSU is fully aware of the importance in original design made by itself. So it gradually improves its design ability. MATSU collaborates with many famous design institutes, for the purpose of creating furniture that is featured by original MATSU style.

创造激发灵感的办公方式

Inspiring Office Lifestyle

# POSITION

## 飘萍休闲游盘

### DISK

办公空间的精灵，悬浮于空间之中。标志性的形式唤起儿时的欢快经历。极强的互动属性带动身心的活力，由内向外调整个人与团队的互动，形成随性、自由的协作氛围，以较好的心态去应对工作事务。

The genie of the office space, suspended in the space. The iconic form evokes the joyful experiences of childhood. Strong interaction attributes drive physical and mental vitality, adjust the interaction between individuals and teams from the inside out, form a casual and free collaborative atmosphere, and deal with work affairs with a better attitude.





非常规使用方式跳脱出周而复始的日常琐事  
悬挂装置，兼具实用性和装饰性  
双层叠放，塑胶底托，容易更换  
两种材质，遵循其不同的属性而放置，达到材质使用最佳体验  
力求在现代办公空间中创造出独到风情的迥异空间氛围

Unconventional use breaks away from the recurring chores  
Suspension device, both practical and decorative  
Double stacked, Plastic bottom support, easy to replace  
Two materials, placed according to their different properties,  
for the best experience with materials  
We strive to create a unique and different spatial atmosphere in the modern office space

## DETAILS

### 悬挂装置

产品自身作为一种装置悬挂于办公空间，以独特的使用体验活跃于办公空间之中。飘萍使用专业安全悬挂绳，良好的承重力，足以负担使用者正常是使用，提供趣味十足的休闲体验。

### Suspension

The product itself is suspended as an installation in the office space, and it is active in the office space with a unique use experience. The disk uses professional safety suspension rope, good load-bearing, enough to bear the user's normal use, providing a fun leisure experience.





## DETAILS



### 顶部金属锁扣

顶部金属锁扣，硬度、强度增强，提升产品的耐磨性能，保障承重能力，为产品安全使用保驾护航。

### Top metal lock fastening

The top metal lock enhances hardness and strength, improves the wear resistance of the product, ensures the bearing capacity, and escorts the safe use of the product.

## DETAILS

### 木质底盘，皮革圆盘

双圆盘设计，底部采用木制底座，利用木材的韧性和强度与绳接触，提升产品使用的期限。上层座面使用皮革材质包裹，坐感舒适。柔软。

### Wooden bottom disk, leather discs

The double disc design adopts a wooden base at the bottom, which uses the toughness and strength of the wood to contact the knot rope and increase the service life of the product. The upper seat is wrapped in leather, making it comfortable and soft.





## DETAILS

### 油蜡皮

油蜡皮是牛皮制皮工艺的一种，需要在水厂工艺中就和普通牛皮的制作工艺分开了。主要区别是鞣制阶段，普通牛皮主要采用铬鞣，植鞣，醛鞣等。油蜡皮采用的是油鞣，皮革鞣制染色后，皮革柔软，弹性好，透气性好，张力大。同时，工艺中的真空干燥过程，使油蜡皮还具有不易霉变的特性。

它的吸水 and 吸油性较强，粘到水和油后的部分，皮面颜色会变深。其实正是油蜡皮的这些特点，让它给人一种怀旧和沧桑的感觉。当皮革被拉伸的时候会产生颜色的深浅变化，此类产品用手刮擦时比较容易出现刮痕，这也是油蜡皮最特殊的一点。

### Oil wax skin

Oil wax leather is a kind of cowhide leather making process, which needs to be separated from the ordinary cowhide production process in the water plant process. The main difference is the tanning stage, ordinary cowhide mainly uses chrome tanning, vegetable tanning, aldehyde tanning, etc. Oil wax skin is used oil tanning, after leather tanning and dyeing, the leather is soft, good elasticity, good air permeability, large tension. At the same time, the vacuum drying process in the process makes the oil wax skin also have the characteristics of not easy to mildew.

It has strong water and oil absorption, and the color of the skin surface will become darker when it sticks to the part after water and oil. In fact, it is these characteristics of oil wax skin that make it give people a feeling of nostalgia and vicissitudes. When the leather is stretched, there will be a change in color, and such products are more prone to scratches when scratched by hand, which is also the most special point of oil wax skin.



## DETAILS



### 底部塑胶底托固定，绳索固定

通过底部塑胶球的位置调整可以调整圆盘的高低位置，方便使用者即时调节，匹配使用体验。使用专用尼龙绳锁，安全耐用，提供专业保障。

### Plastic bottom support, Rope fixation

The height and low position of the disc can be adjusted by adjusting the position of the plastic ball at the bottom . It is convenient for users to adjust in real time to match the user experience.





讨论区

飘萍休闲游盘 + 心跳沙发 + Panache 茶几 + Marsh 沙发 + Singlax + Bowler 休闲椅

Discussion area

Disk + Pulse sofa + Panache sidetable + Marsh sofa + Singlax + Bowler Lounge chair



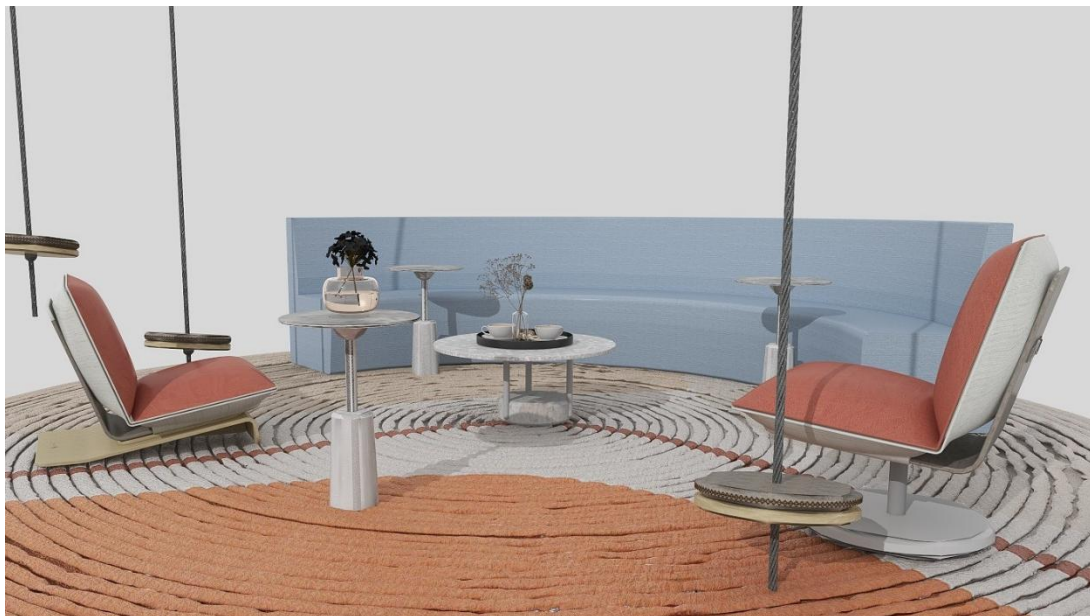
私人空间

飘萍休闲游盘 + 都市牧人休闲椅

Private space

Disk + Skin lounge chair

# SCENES



休闲区

飘萍休闲游盘 + 卡坐沙发+ 都市牧人休闲椅+ Panache 茶几 + 颂今茶几

Leisure area

Disk + Anole sofa + Skin lounge chair + Panache sidetable + Drumroll sidetable



休闲区

咖啡豆休闲椅 + 咖啡豆茶几 + 都市牧人休闲椅 + 捕影落地灯

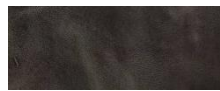
Leisure area

Coffee chair + coffee table + skin lounge chair + mesh floor lamp

# Materials

皮革 示例

Leather e.g.



灰色油蜡皮  
waxed yak hide

灰色 grey	铁灰色 Steel grey	黑色 black	橘色 orange	浅棕色 light brown
棕色 brown	炭灰色 Charcoal gray	深咖 Dark coffee	卡其 khaki	冷灰 Cold grey

白橡木实木

White Oak



清漆本色  
Varnish true color



# INSPIRING OFFICE LIFESTYLE

## MATSU SHANGHAI FLAGSHIP SHOWROOM

上海市徐汇区益贾洪路686号

No. 686 Zhaojiabang Road, Xuhui District; Shanghai, P.R. China, P.C.: 200030

T +86 21 5456 0662

## MATSU BEIJING SHOWROOM

北京市朝阳区光华路9号光华路SOHO2期B座1202/3室

Room 1202/3, Tower B, Guanghai SOHO II, No.9Guanghai Road, Chaayang D Beijing. P.R.China, P.C.: 100020

T +86 10 5900 721 0

## MATSU GROUP HEAD OFFICE

上海市闵行经济技术开发区南沙路8号

No. 8 Nansha Road, Minhang Economic Development Zone, Shanghai, P.R. China, P.C.: 200245

## MATSU GUANGZHOU FACTORY

广东省中山市南朗镇第一工业区工业大道龙基路1号

No.1 Longli Road, Industrial Avenue, No. 1 Industrial District; Nanlang Town, Zhongshan, Guangdong, P.R. China, P.C.:

528451

T +86 760 8558 8180

E info@matsu.cn